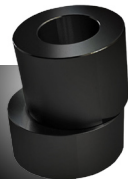




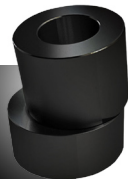
SPHERICAL[®] SPACER GENERAL DIMENSIONS



RotaChock [®] Spherical Spacer size	Diameters \varnothing		Standard bolt size	Heights		Angular Offset	Rated load	Weight
	Outside	Inside		Max.	Reduced min.			
	mm	mm	M	mm	mm	degrees	kN	kg
SS16/18	37	19	16/18	50	20	4	200	0,2
SS20/22	46	23	20/22	50	20	4	300	0,4
SS24/27	56	28	24/27	60	28	4	400	0,7
SS30/33	67	34	30/33	60	28	4	600	1,0
SS36/39	80	40	36/39	70	34	4	900	1,7
SS42/45	93	46	42/45	70	34	4	1200	2,3
SS48/52	112	55	48/52	70	34	4	1600	4,3
SS56/60	126	62	56/60	70	34	4	2200	5,8
SS64/68	139	70	64/68	70	34	4	2800	7,2



SPHERICAL[®] SPACER GENERAL DIMENSIONS



RotaChock [®] Spherical Spacer size	Diameters ϕ		Standard bolt size	Heights		Angular Offset	Rated load	Weight
	Outside	Inside		Max.	Reduced min.			
	inch	inch	inch	inch	inch	degrees	kip	lbs
SS16/18	1,46	0,75	5/8 to 3/4	1,97	0,79	4	45	0,44
SS20/22	1,81	0,91	3/4 to 7/8	1,97	0,79	4	68	0,88
SS24/27	2,20	1,10	7/8 to 1	2,36	1,10	4	90	1,54
SS30/33	2,64	1,34	1-1/8 to 1-3/8	2,36	1,10	4	135	2,20
SS36/39	3,15	1,57	1-1/8 to 1-1/2	2,76	1,34	4	202	3,75
SS42/45	3,66	1,81	1-3/8 to 1-3/4	2,76	1,34	4	270	5,07
SS48/52	4,41	2,09	1-15/16	2,76	1,34	4	360	9,48
SS56/60	4,96	2,44	2-3/16 to 2-3/8	2,76	1,34	4	495	12,79
SS64/68	5,47	3,03	2-9/16	2,76	1,34	4	630	15,87